



CHINOOK WOODTURNING GUILD NEWSLETTER

A CHAPTER OF THE AMERICAN ASSOCIATION OF WOODTURNERS · VOL 2022, NO 1 · Jan. 2022

PRESIDENT'S MESSAGE

Masks, rules, QR codes, arctic weather, cancelled everything, ... Enough said!

For nearly two years we have been trying to figure out how to maintain a woodturning group when we cannot meet. The best option has been interactive remote demonstrations by accomplished turners from elsewhere. These have been pretty successful, but it can get a little stale watching other guys having fun woodturning. Sooner or later it's time to get into the workshop and make our own shavings and sweep our own floor. It doesn't help that the sun refuses to rise before 8am, that some of our workshops are too cold to work in and the pervasive gloom causes a general lack of enthusiasm.

Recently we challenged our members to explain the construction of an art object in a photograph. The follow up Zoom sawdust session was lively with suggestions and discussion because there was a focus topic and a couple of weeks lead time for thought and experimentation in the workshop. Without the challenge topic, our Zoom meetings are mostly show and tell exercises with everybody waiting for someone else to speak up. We have pretty well abandoned twice a month meetings, but try to fill in with IRDs.

And, we have two upcoming IRDs on the books at this time. Eric Lofstrom will visit us via the internet on 6 February to tell us his approach to body stance and movement at the lathe, demonstrate his signature Namaste bowls and perhaps make a top or two, and



ANNOUNCEMENTS & EVENTS

6 February 2022. Eric Lofstrom will present an IRD on making his elegant, internally decorated bowls. Eric is an experienced and entertaining teacher. His attention to detail and eye, hand, body coordination in tool handling has lessons for us all.



Membership Fees.

Student Member	\$40.00
Regular Member	\$75.00
Family Membership	\$125.00

Payment can be made in 1 of 2 ways:

1. E-transfer to –
cwgtreasurer021@gmail.com
2. Send a cheque (payable to Chinook Woodworking Guild) to Chinook Woodturning Guild c/o CASA, 230 8-Street S., Lethbridge, T1J 5H2

Malcolm Zander will present an IRD on his incredible detailed piercing techniques. February, date to be announced. Don't miss this. Malcolm is a world class Canadian artist.

President's Message continued

Malcolm Zander, from Ontario will reveal his secrets in wood piercing later in February.

In the meantime, to encourage our woodturners, we are piloting a mentorship program which will see three or four of our members spend half a day woodturning in my wood shop with one or two experienced turners. My shop because it is large enough for physical distancing. This program will be

by invitation and will initially concentrate on new or less experienced woodturners. Times may vary week to week and turning projects will be up to the turner. I hope this will partly compensate for not being able to meet as a guild in the whole. And that time will come. Wish I knew when.

Dan Michener

The CHALLENGE

This bowl is the 1995 artwork of Hayley Smith and is in the Los Angeles County Museum of Art. The picture was forwarded to me by Paul McGaffey with a question of how it may have been made.

The Challenge to our members was to consider how it may have been made and then to make a bowl more or less similar to the one pictured.

Thus began a wide-ranging discussion of woods, colouring, carving, glue ups and fillers.

Questions arose about whether this was a single piece of wood or several to account for the dark and light colours. Are the stippled areas following the grain carved from the single turning blank or are they inserts glued into the blank before or during the turning?

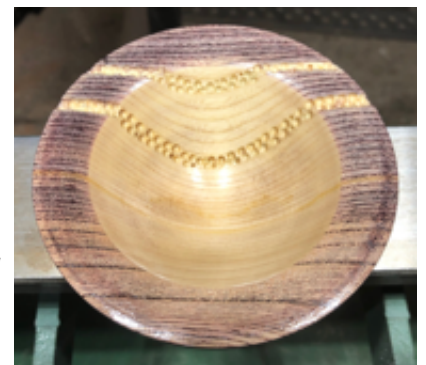
If they are inserts, how can they follow the grain so perfectly? If they are not inserts, how did the artist get wood with the grain so straight and true that the curve is symmetrical? How was the stippling done and how did the artist achieve such a sharp line between the light and dark woods if they are all one piece?

Here are the pictures and comments of our members.

An attempt on the "theme" of the challenge from scraps in my shop. Quarter sawn oak, cherry, and black walnut. Later, ... "Having gone the lamination route, I now think the sample bowl was turned from a single piece of wood, with the outside and the rim of the bowl finished, ebonized, then the inside of the bowl turned and the detail lines textured using a rotary tool using grain lines as the guides.
Neil Stewart.

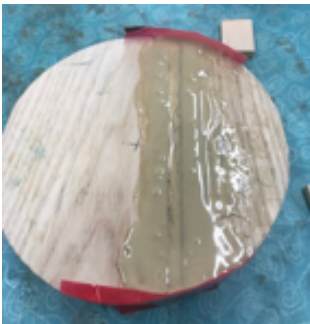


The bowl blank is Ash. The wood must be 1/4 sawn in order to get the proper grain orientation. My ash supply is minimal and hence ended up with a diameter of 4 3/8 inches.
Steve Munroe

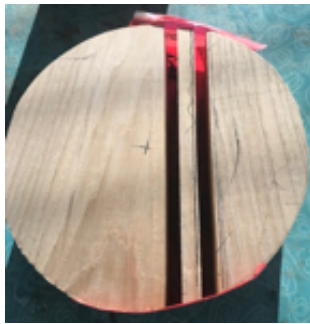


The CHALLENGE continued

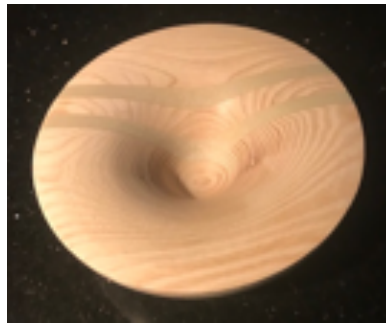
John Vandenberg's series of 5 pictures show how he made an epoxy insert in the blank before turning and decorating the bowl.



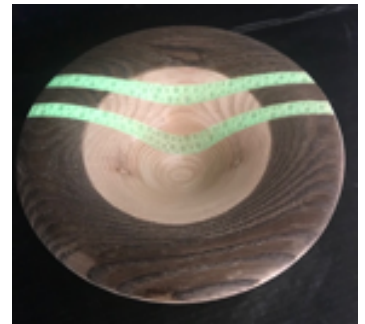
*Step 1
One piece ash cut and
taped for epoxy.*



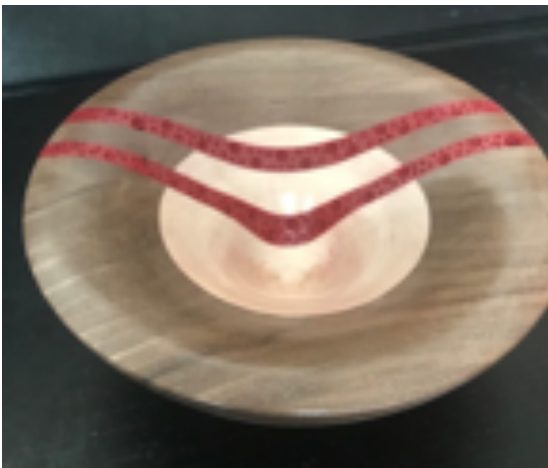
*Step 2
Filled with epoxy.*



*Step 3
Turned on Lathe.*



*Step 4. Covered glow in
the dark epoxy with tape
and covered centre, used
air brush to darken outside
edge and used air tool for
indents.*



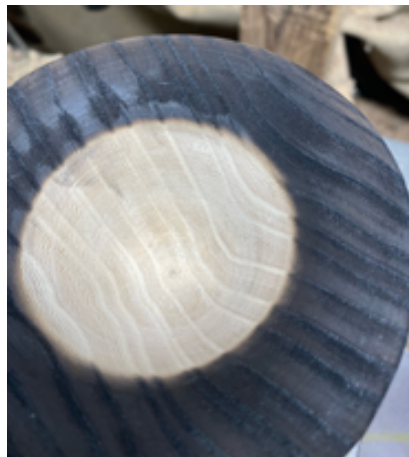
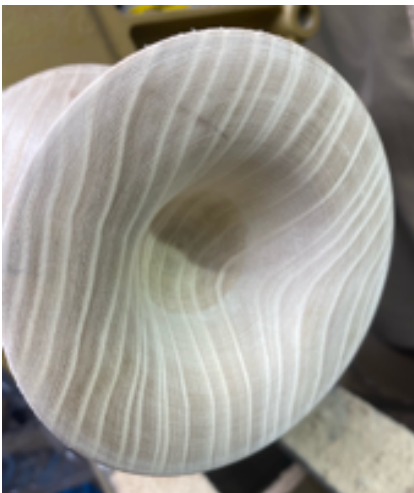
*Second bowl. Walnut and maple, red
epoxy, no grain match.
John Vandenberg*



Dan Michener



Roger Wayman sent pictures of his Elm bowl making, burning and carving.

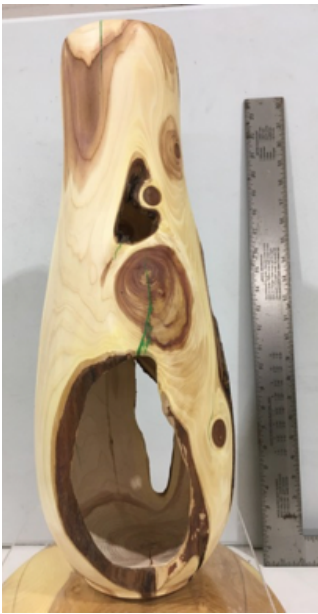


*Not done yet.
Roger Wayman*

INSTANT DISTANT GALLERY



*Celtic Knot pen.
Terry Beaton*



Juniper vase. 20" tall. Wipe on poly finish. Can't sand this on the lathe without losing a finger or two.

A juniper log was lying on my shop floor, trying to trip me for a year or two. I think it came from Ladybug Arborists, and it had so many branch cut off stubs it looked like a porcupine. Finally I got ambitious and cut off the projections and turned the rest as a single piece. Filled some of the cracks with green epoxy. It may not be art, but it is not without interest and it isn't on my floor anymore.

Dan Michener



Beads of Courage box, Siberian Elm with Sapele lid. The inside is raw, unfinished wood.

Dan Michener



I had a large chunk of Lilac on the shop floor. It made an ungainly vase. I left the sides and bottom thick so it wouldn't fly apart on the lathe. 8" high x 7" wide. Weight - heavy. Tung oil finish. Not everything is a work of art.

Dan Michener



Here's a little project. Played with epoxy and willow. Can't get the finish smooth no matter what I do but the colours are cool.

Duane Vandenberg



I was cleaning out a drawer in my workshop and found a new captive ring tool that I had purchased years ago and forgot about. I had to try it out. Turning is of Ash that was slated for the wood stove.

Steve Munroe

BEADS of COURAGE

Take note of the Beads of Courage box created by Dan Michener and also displayed in the **Instant Distant Gallery** above.

John VandenBerg.
Bead of Courage Coordinator

*Beads of Courage box, Siberian Elm with Sapele lid. The inside is raw, unfinished wood.
Dan Michener*



How to join a Zoom Meeting

This information is from a previous Central Alberta Woodturners newsletter

On desktop, tablet or phone by downloading the app.

1. Download the **Zoom desktop app** on your Mac or PC. <https://zoom.us/download>
2. Open the **Zoom app**.
3. Click **Join a Meeting**.
4. Enter the **Meeting ID** and your **name**, and set **audio/video permissions**.

On desktop, tablet or phone via meeting invite link.

1. Click on the Meeting Invite URL that the host shared

2. via email or text.
 3. Open the **Zoom app**.
 4. **Approve** the request for **permission** to use your computer's **audio and camera**.
- Depending on the meeting's set-up:
- you may enter the meeting right away
 - you may need to wait for the host to arrive first or
 - you may be placed into a waiting room that the host controls.

ANDRÉ'S PREFERRED WEB SITES OF THE MONTH

Tim Soutar (<https://www.timsoutar.com/>) is a fantastic turner from Victoria, B.C. He can turn full time since he has retired from a career in oceanography. He likes local woods like fruit trees and broad maple but his preferred wood is arbutus or madrone (*Arbutus menziesii*), a native species of the west coast and it is Canada's only native broadleaved evergreen tree. I have seen arbutus only once; Roy Reti brought back some while he was visiting one of his daughters in Vancouver a few years back. You will be in for a great treat once you start to visit Tim's web site as you will find a large variety of bowls, platters, boxes, spheres, hollow forms and vases, some decorated, some embellished by color, pyrography, carving or all. My preferred ones are the carved spheres with color and burning and the bowls with pyrographed geometric design. Enjoy the work of a great turner who went forward with his own web site a few weeks ago. Of course, we have many local examples of excellent turners in our guild who became accomplished turners in their retirement. Tim could also be an amazing demonstrator to welcome in Lethbridge once in-person sessions can resume. Tim is also very much involved with his local "Island Woodturners Guild". He was the force behind making impromptu Instant Gallery meeting in Victoria's parks during spring 2021 and reconnecting members of his guild.

Richard Findley (<https://turnersworkshop.co.uk/>) is an accomplished and very skilled UK production turner that does interactive remote demonstration (IRD) as a relaxation from his production work. He does a large variety of products including architectural & joinery, barley twists, one of a kind restorations and commissions, turning for furniture, bowls, awards and trophies. It seems that nothing can stop him from carrying out any project. He offers a large variety of IRDs including spindle turning, bowl turning, sharpening, table lamp project, box with insert and barley twists. He is a wonderful teacher and he explains very well his approach and how to perform every cut that he will demonstrate. A word of wisdom from him was ``why use hardwood when you are developing a project, use pine or a soft species to develop your model until you are ready for the real piece. It is faster and physically much easier to design a particular barley twist prototype as there is a lot of cutting and sanding to do``. However to be able to see and enjoy some of his beautiful work you need to go on Instagram at https://www.instagram.com/richard_findley/. More and more artists are minimizing the presentation of their work on their own web sites in favour of Instagram where the work can be shared more rapidly.

I was reminded by Sam Sampredo in the January Issue of the *Great Falls Woodturners' Newsletter* about the importance of references to be able to identify wood. Sam's preferred site is the following <http://hobbithouseinc.com/personal/woodpics/#letterB>, a great site to discover and to use. You can see many example of pieces of wood from a single species in different cuts and also turned objects. A site to keep handy. Thanks Sam! A site that I have often used is the Wood database (<https://www.wood-database.com/>) created by Eric Meier, a very simple and easy site to consult and use. This is the site that I have used to figure out what was the beautiful yellow tarara wood that Steve Munroe used to make a great looking box in December. If you prefer a hard copy reference, ``The Wood Dictionary: From Acacia to Ziricote`` by Eric Meier (reprinted in September 2021) is a very useful option (<https://www.amazon.ca/dp/0982246064>) or a very nice gift option. The same content of the book but under a different name "*WOOD! Identifying and Using Hundreds of Woods Worldwide*" is also available if you live outside North America.

Lichtenberg generators pose life-threatening danger to users

Summary

- Product: Lichtenberg generators
- Issue: Consumer products » Electrical hazard » Unauthorized products
- What to do: Do not attempt to build or use a Lichtenberg generator for any purpose; immediately disassemble and deactivate any homemade Lichtenberg generators; and report the sale of any Lichtenberg generators to Health Canada.

Issue

Health Canada is aware of six reports of fatal injuries in Canada since 2017 resulting from the use of wood-burning devices known as Lichtenberg generators. This information was reported from provincial and territorial electrical safety authorities.

Lichtenberg generators are often promoted as wood-burning devices that are intended to create art or abstract objects. They rely on high-voltage electrical currents to produce patterns, a technique called fractal burning. These devices also contain live accessible wiring components and are extremely unsafe for any use or handling.

These high-voltage electrical devices have been found for purchase online as complete units and have been built by users from electrical sources salvaged from consumer products, notably high-voltage energy sources from microwave ovens.

Health Canada is strongly advising Canadians not to attempt to use or assemble a Lichtenberg generator for any purpose because they can result in fatal injuries to users and bystanders.

Despite advertisements or information consumers may find online, these devices are not approved by certification or inspection bodies and have not been evaluated or tested to any Canadian safety standards.

What you should do

- Do not attempt to build, purchase or use a Lichtenberg generator for any purpose.
- Discontinue the use of any homemade Lichtenberg generators immediately. Safely deactivate and disassemble the devices and dispose of the electrical components according to local/municipal guidelines.
- Discontinue the use of any complete Lichtenberg generators that may have been purchased and [report the sellers to Health Canada](#).
- Use consumer electrical products as they are intended and only use those that bear a recognized [Canadian electrical safety certification mark](#).

What Health Canada is doing

Health Canada is committed to helping protect Canadians from potentially dangerous consumer products. The Department regularly monitors consumer products on the Canadian market to verify that they comply with Canadian legislation and do not pose a danger to human health or safety.

If Health Canada becomes aware of Lichtenberg generators being imported, distributed, advertised or sold to Canadians, the Department will take appropriate action to mitigate risks to human health and safety.

Report health and safety concerns

Health Canada advises consumers to check the Government of Canada's Recalls and Safety Alerts website regularly for any [recalled products](#) and to [report any consumer-product-related health or safety concerns](#).

For more information

- [Electrical product safety](#)
- [Electrical Safety Authority \(Ontario\) – Lichtenberg Generators](#) (*English only*)

Stay connected with Health Canada and receive the latest advisories and product recalls using social media tools.

Media enquiries

Health Canada
(613) 957-2983

hc.media.sc@canada.ca

Public enquiries

(613) 957-2991
1-866 225-0709

hcinfo.infosc@canada.ca

This was passed on to us by the
Central Alberta Woodturners

THE AMERICAN ASSOCIATION OF WOODTURNERS

The American Association of Woodturners is a huge source of information on all things related to woodturning. This is a worldwide organization encompassing woodturners of all interests and skills. Many benefits accrue to members. If you are not a member you can check out their website here

SUBMISSIONS REQUEST FROM GUILD MEMBERS

I again want to encourage any of you who have a story regarding wood and turning, or anything related, to feel welcome to write up your experience and submit it to me for inclusion in the newsletter.

It has also been quite some time since anyone has written an introduction of themselves to the Guild. Several new members have joined while we have not been able to meet. Please take a few moments to tell us about yourself, your experiences and your dreams and I will include it in an upcoming newsletter. (New members encouraged).

If you are not comfortable writing, contact me and we will work on it together. We would like to know you.

Roy Harker - nlharker@gmail.com

ABOUT THE GUILD

The Chinook Woodturning Guild was formed in September, 2004. The Guild's main emphasis is skill improvement and camaraderie.

mailing address:

% Casa
230 - 8 Street South
Lethbridge, AB
Canada T1J 5H2

Meetings are at 7 pm the 3rd Thursday each month, Sept through June at the Casa building on 8th Street South in Lethbridge

A map to the meeting location is found on our website.

[http://
www.chinookwoodturning.org/](http://www.chinookwoodturning.org/)

Guild meetings are being held on line via Zoom until it is deemed safe to meet face to face again.



President

Dan Michener
403-331-9177
michenerdan@gmail.com



Treasurer

Terry Beaton
403-308-4552
terry_beaton@shaw.ca



Vice-President

Norm Robinson
403-404-4428
NormRobinson@hotmail.com



Beads of Courage Chairman

John Vandenberg
403-380-0141
fayjohn@shaw.ca



Secretary & Newsletter Editor

Roy Harker
ph 587-316-0255
txt 385-245-9449
nlharker@gmail.com

Newsletter Contributors:

Dan Michener

Roy Harker

André Laroche

John Vandenberg